



LOCKER ROOM UNITS

OVERVIEW

SeaBox Depot locker rooms are custom built to suit our client's needs. If you are looking for a comfortable, secure place for crew on site, this is the solution for you.

Always built to CSA A277 code, our locker rooms can be used year round in all weather conditions.

FEATURES:

- Turn-Key Camp Solution
- Remote & Versatile
- Easy To Set Up & Expand
- Customizable Floorplan
- CSA A277
- AB Part 10 Certified

- Durable
- HVAC Unit
- Insulated
- Framed Interior
- Various Locker Configurations

ADDONS:

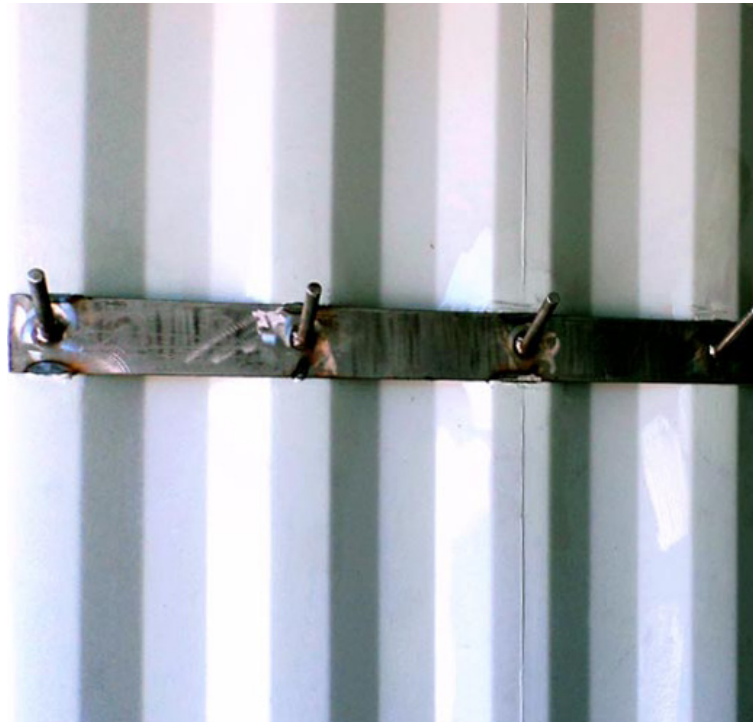
- Customized Electrical Packages
- Security Windows
- Generator Options
- Skids (Weld or Twist Lock)
- Sandblasting & Painting

- Skylights
- Custom Interior Finishing Options
- Custom Shelving (Steel or Wood)
- Hat & Coat Racks



**5906 45 STREET
LEDUC, ALBERTA
CANADA T9E 7B4**

**780.986.8660
SALES@SEABOXDEPOT.COM
SEABOXDEPOT.COM**



LOCKER ROOM UNITS

OVERVIEW

SeaBox Depot locker rooms are custom built to suit our client's needs. If you are looking for a comfortable, secure place for crew on site, this is the solution for you.

Always built to CSA A277 code, our locker rooms can be used year round in all weather conditions.



5906 45 STREET
LEDUC, ALBERTA
CANADA T9E 7B4

780.986.8660
SALES@SEABOXDEPOT.COM
SEABOXDEPOT.COM